



# University of Connecticut

## DIRECTOR, ENVIRONMENTAL HEALTH AND SAFETY POSITION AVAILABLE

### Great Opportunity

- Top Public University In New England
- Expert Division Heads

UCONN is located in Storrs, Connecticut

- 1.5 hours to Boston & Providence
- 2 hours to NYC
- 1.5 hours to Ocean

Connecticut provides a wide variety of cultural and natural resources. The natural resources include rivers with opportunities for canoeing, fishing, white water rafting and leisure boat rides, and over 100 state parks (over 168,000 acres).

As one of the 13 original colonies, CT is a lace work of preserved Early American and Colonial structures and sites. Today, world-class theater, Mystic Seaport and Aquarium, music and art museums contribute to its well-stocked treasure-trove for seekers of cultural pursuits. Connecticut's small size, great diversity of terrain and wide open spaces make it a great place to live and work.

### University of Connecticut (UCONN)

#### Description:

The University of Connecticut is the state's flagship institution of higher learning. Founded in 1881, the University of Connecticut has grown to include 10 Schools and Colleges at its main campus in Storrs, separate Schools of Law and Social Work in Hartford, five regional campuses throughout the

state and Schools of Medicine and Dentistry at the UCONN Health Center in Farmington. UCONN is a Land and Sea Grant public institution and a Space Grant Consortium institution. The University of Connecticut is the University of Choice for academically talented students. **UCONN has stood as the top public university in**

**New England for eight consecutive years.** The University is undergoing an amazing transformation. UCONN is renewing, rebuilding and enhancing its campuses through an unprecedented \$2.3 billion, 20-year state investment in the University's infrastructure. State-of-the-art facilities grace every campus.



#### Demographics:

The University of Connecticut is comprised of the main campus located in Storrs, the Law School located in Hartford with regional campuses in West Hartford, Waterbury, Avery Point, Torrington, and Stamford. The University spans 4,104 acres at

its main campus and five regional campuses. Total enrollment at all campuses is approximately 29,000 students. The Storrs campus has an enrollment of approximately 23,000 undergraduate and graduate students, including a resident undergraduate population of approximately

12,000 students. There are approximately 5,000 full and part-time faculty and staff not including the health center.

The EHS Department handles all safety issues at the main campus and all regional campuses, excluding the Health Center.

## Department of Environmental Health and Safety

**Mission of the Department**—to provide comprehensive environmental health and safety services for the University community by developing and administering effective policies and procedures that prevent personal injuries and maintain regulatory compliance in the areas of biological, chemical, occupational and radiation safety, thereby supporting the University's mission of teaching, research and public service.

**Biological Health & Safety Section** manages activities related to Biosafety and Public Health programs. The Biosafety programs involve program development and implementation, laboratory/facility registration/audit, risk assessment, training and biosecurity. The Public Health programs involve administration of the state public health code regarding food safety, drinking and recreational water quality and public health issues related to University housing.

**Chemical Health & Safety Section** manages hazardous waste that is generated by research labs and university support services, and maintains a hazardous waste storage facility. Their major chemical safety issues include laboratory safety inspections, training, oversight of the use of controlled substances, and chemical fume hood evaluations.

**Radiation Safety Section** manages the radiation license for the University with the Nuclear Regulatory Commission. Through training and inspections of laboratories, they maintain controls on the use of radioactive materials, the disposal of radioactive waste and the use of X-ray and laser machines. They monitor radiation contamination of facilities and human exposure to radiation.

**Occupational Health & Safety Section** administers most other employee health and safety issues regulated by OSHA, EPA and CT DPH. They develop policies and programs, conduct training, and perform inspections covering a broad range of safety topics including: Asbestos, Confined Space Entry, Electrical Safety, Ergonomics, Hazard Communication, Indoor Air Quality, Machine and Vehicle Safety, Lead, Respiratory Protection, Lockout/Tagout, Noise, Trenching/Excavation & Fall Protection.



## Director, Environmental Health & Safety

### POSITION SUMMARY

Reporting to the Associate Vice President of Public and Environmental Safety, the Director provides strategic leadership and is responsible for the development, implementation and administration of comprehensive environmental health and safety programs and policies for the University and its Regional Campuses. The Director is responsible for the assessment of environmental and occupational health and safety risk elements, advising University administrators of the acceptability of such risk, ensuring compliance with all applicable environmental and occupational health regulations, serving as University liaison with more than 10 cognizant regulatory agencies and interacting with the media regarding environmental health and safety issues. This is a full-time, 12 month per year position.

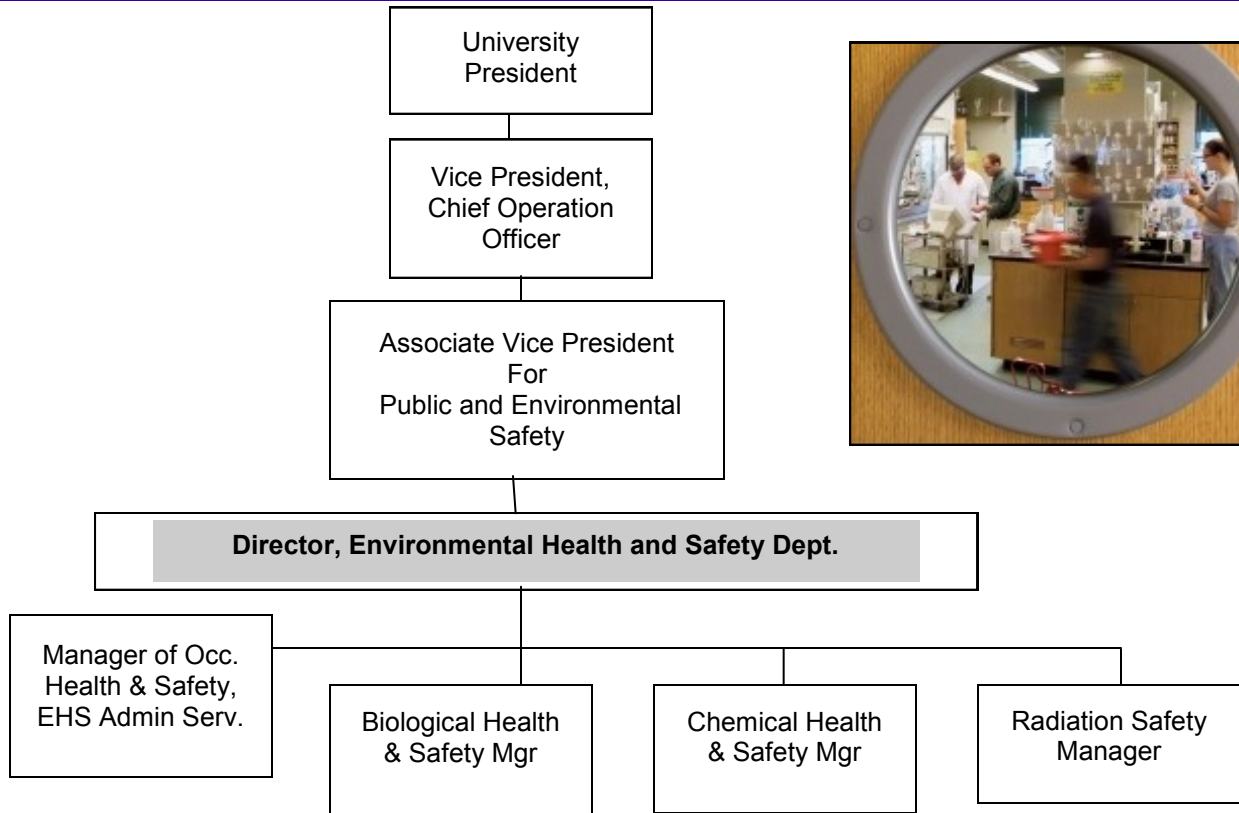
### QUALIFICATIONS

- Masters degree in Environmental Health & Safety, Occupational Health & Safety, Environmental Science, Public Health & 10 yrs of professional experience including 5 yrs in leadership position directing or managing a multi-faceted environmental health & safety program
- Professional Certification in one or more of the EHS disciplines i.e. CIH, CSP, CBSP, CHP, CHMM
- Thorough knowledge of EHS related Gov. regs. & nationally recognized standards
- Substantive expertise and experience in the evaluation and control of hazardous conditions
- Substantive experience developing EHS Programs
- Demonstrated effective written & oral communication skills, including proficient risk communications & media relations
- Established interpersonal skills; proven take-charge leadership style; ability to be collaborative
- Demonstrated abilities in sound fiscal, operational and personnel management.

### Preferred Qualifications

- Doctoral Degree in EHS discipline
- Managerial degree or certificate
- Demonstrated capabilities in strategic planning, program design & development, team building & training
- Experience working in union environment.

Please request a complete copy of the job description for more details



## Characteristics of the Ideal Candidate

- Thorough knowledge of subject matter for the department with very strong management skills to handle all budget, personnel and complex issues facing EHS
- Vision for where the department needs to go with the judgment to move it forward at a manageable and realistic pace
- Must be a good motivator, negotiator, facilitator and trusted team player
- Understands customer service and follow through with concerns from various groups
- Ability to promote the importance of Environmental Health and Safety
- As EHS supports the academic and research missions of the university, the individual must facilitate the forward movement of the University mission with the mission of EHS
- A transformational leader with vision and passion that inspires people to buy in and work together toward common goals
- Excellent people skills and the ability to keep the research community in regulatory compliance through effective engagement that promotes co-operation
- A quick-study who can take complex information, distill it, and communicate in understandable and relatable terms
- Ability to bring more cohesion to the department as one unit and provide a clear unified direction for the department that meets the needs of the University community
- Ability to be a major player in emergency management issues on all campuses
- Experience in hazardous waste management and disposal





## **Challenges and Opportunities**

- UCONN 2000 Building Projects is still active which requires management of safety issues surrounding construction projects
- The continued role of homeland security issues related to chemical, biological and radiological agents on campus and their regulations
- The EHS department works with more than five campus-wide committees which need to be monitored and directed to accomplish their mission
- Coordination of EHS with Office of Research Compliance is critical to maintain research funds and insure training of faculty, staff and students
- Increase EHS Department's role in the academic programs under Allied Health through guest lectures and internships for students
- Management of risk in a complex/large organization and the ability to assure management that policies, regulations, and safety procedures are in place
- Create a University culture that integrates health and safety in all areas
- Collaborate with Student Health Services with issues such as pandemic pandemics as well as addressing employee and occupational health issues.
- Complying with all the rules and regulations in an era of dwindling resources

---

## **Compensation and Application Process**

The starting salary for this position is negotiable depending on qualifications and experience. Position receives an excellent benefits package which includes:

- Various Health Insurance options (medical and dental) for employee and family
- Pension and Retirement plan options
- 12 paid holidays /year -15 paid sick days /year -22 paid vacation days / year - 1.5 personal days per year
- Tuition waivers for self and dependent children in programs at UCONN
- Tuition reimbursement provided for other accredited schools and colleges

For more information about UCONN or EHS see following web sites:

[www.uconn.edu](http://www.uconn.edu) or [www.ehs.uconn.edu](http://www.ehs.uconn.edu)

If you meet these qualifications and want to be considered for this exceptional career opportunity at a top university, please visit the University's *Husky Hire* online applicant system at: <http://www.jobs.uconn.edu/index.html> Submit a letter of application, resume, that demonstrate how you meet the qualifications and requirements of this position, and contact information for three professional references. (Please submit resume, etc. as separate attachments for easy downloading) First screening cut off date is 8/13/10

**For additional information contact:**

**Ms. Randi Frank**  
**Randi Frank Consulting, LLC**  
[rfrank05@snet.net](mailto:rfrank05@snet.net)  
[www.randifrank.com](http://www.randifrank.com)  
**203-284-3707**

UCONN is an EEO/AA employer and encourages women and minorities to apply.